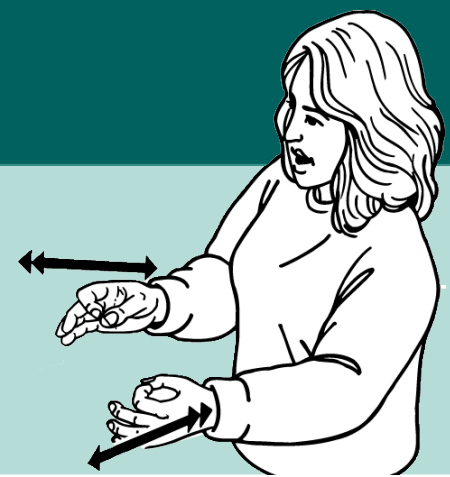


Deaf Community engagement

Strategic Plan



We warmly welcome you to share your thoughts on our strategic direction for the next 3 years.



Auckland Deaf Club

Ko Taku Reo Deaf Community Meeting

Facilitator - Nicki Morrison

Auckland Deaf Club, Hillsborough
Saturday 14 June 2025
1pm - 2.30pm
NZSL interpreters provided

Tauranga Deaf Club

Ko Taku Reo Deaf Community Meeting

Facilitator - Nicki Morrison

Ko Taku Reo SRC, Bethlehem
Friday 13 June 2025
6pm - 8pm
NZSL interpreters provided

Wellington Deaf Club

Ko Taku Reo Deaf Community Meeting

Facilitator - Nicki Morrison

Wellington Deaf Club, Johnsonville
Friday 6 June 2025
7pm - 8.30pm
NZSL interpreters provided

Christchurch Deaf Club

Ko Taku Reo Deaf Community Meeting

Facilitator - Nicki Morrison

Christchurch Deaf Club, Central City
Tuesday 3 June 2025
6pm - 7.30pm
NZSL interpreters provided

